

Preliminary Findings

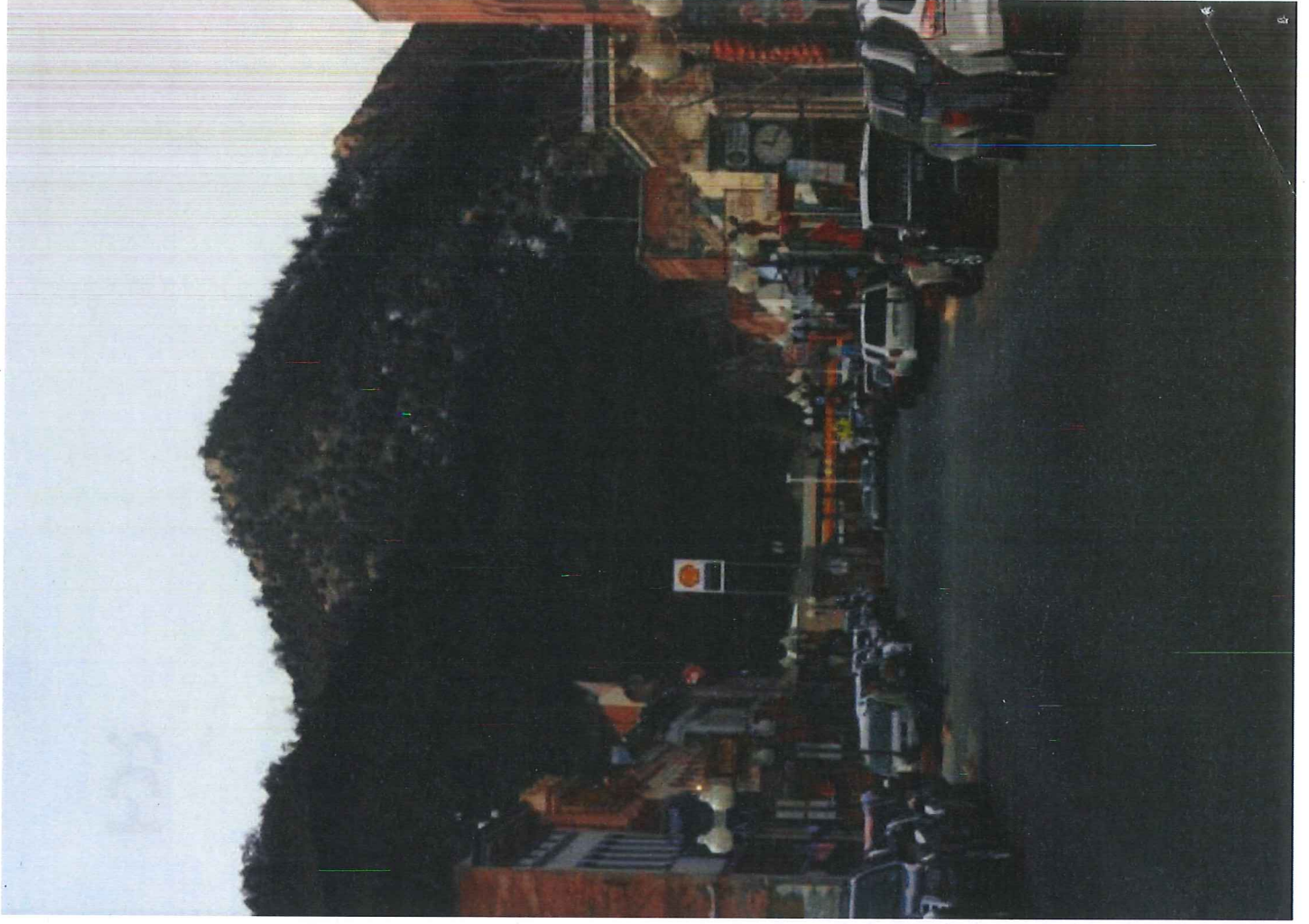
Infrastructure Assessment

City of Idaho Springs

HDR

Approach

- Input Data
- Capital Improvement Score
- Cost Estimates

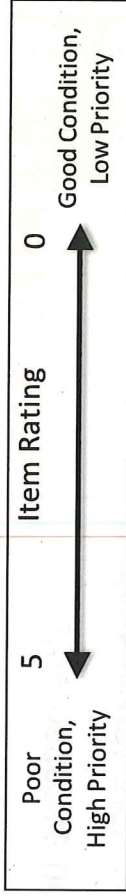


Input Data

- GIS Data
 - o Roadway alignments and dimensions from Clear Creek County and CDOT
 - o Water and Wastewater alignments from Clear Creek County
- Field Assessment of Roadway Condition
 - o Roadway surface
 - o Sidewalk and curb & gutter
- 3 Workshops with City Staff (Planning and Public Works)
 - o Identify critical infrastructure (priority score)
 - o Infrastructure condition assessments
 - o Revise County GIS data to reflect existing conditions

Capital Improvement Score

Condition Rating for Each Infrastructure Type



Criteria Weighting

Item	Weighting (%)
Street Condition	30%
Street Priority/Use	25%
Drainage	5%
Water	15%
Wastewater	25%

Total 100%

CIP Score Rating

CIP Score Rating
A
B
C
D
F

CIP Prioritization

CIP Prioritization								
CIP Rating	Street Segment ID	Street Name	Pavement Condition	Street Priority/Use	Drainage	Water	Wastewater	CIP Score
D	97-B	23rd Av	2	2		3	4	2.6
C	38	Virginia St	2	3		1	4	2.5
C	91-A	Miner St	4	3		2	1	2.5
C	60	16th Av	2	2		2	4	2.4
C	24	High St	4	3		1	1	2.4
C	108	27th Pl	4	2		4		2.3

Capital Improvement Rating

CIP Rating

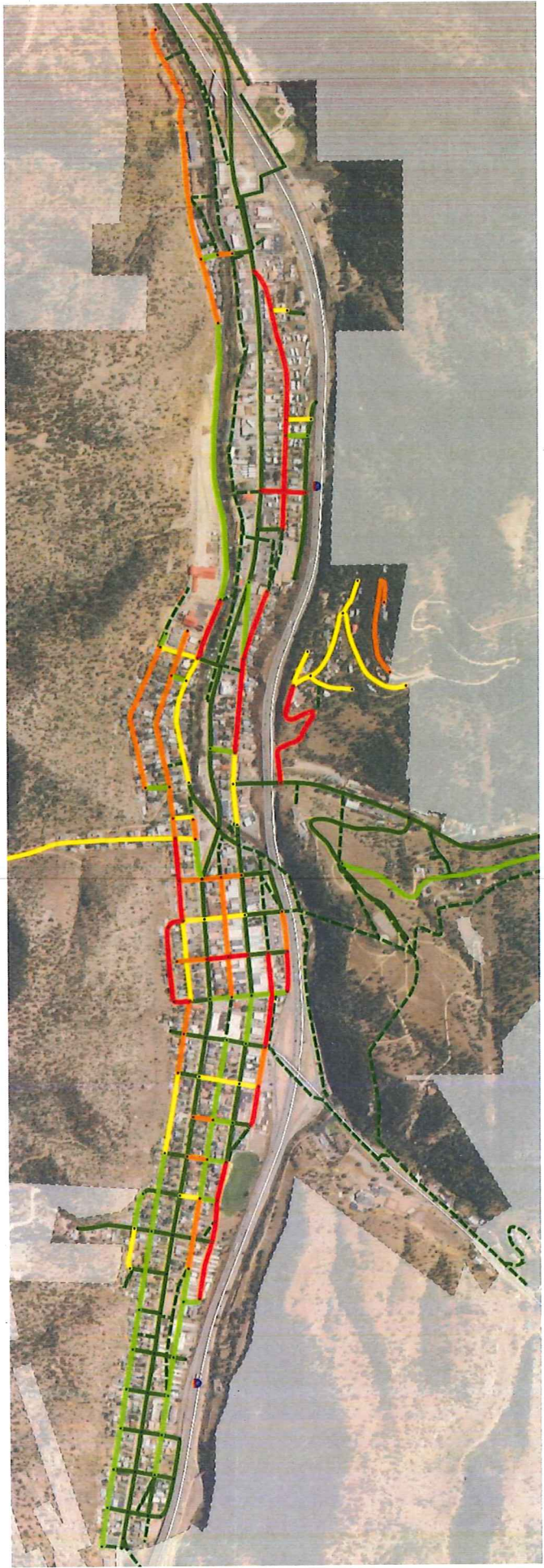
A

B

C

D

F



Cost Estimates

CIP Rating	Total Cost w/Contingency
A	\$0
B	\$9,915,662
C	\$9,407,932
D	\$9,189,161
F	\$9,478,465